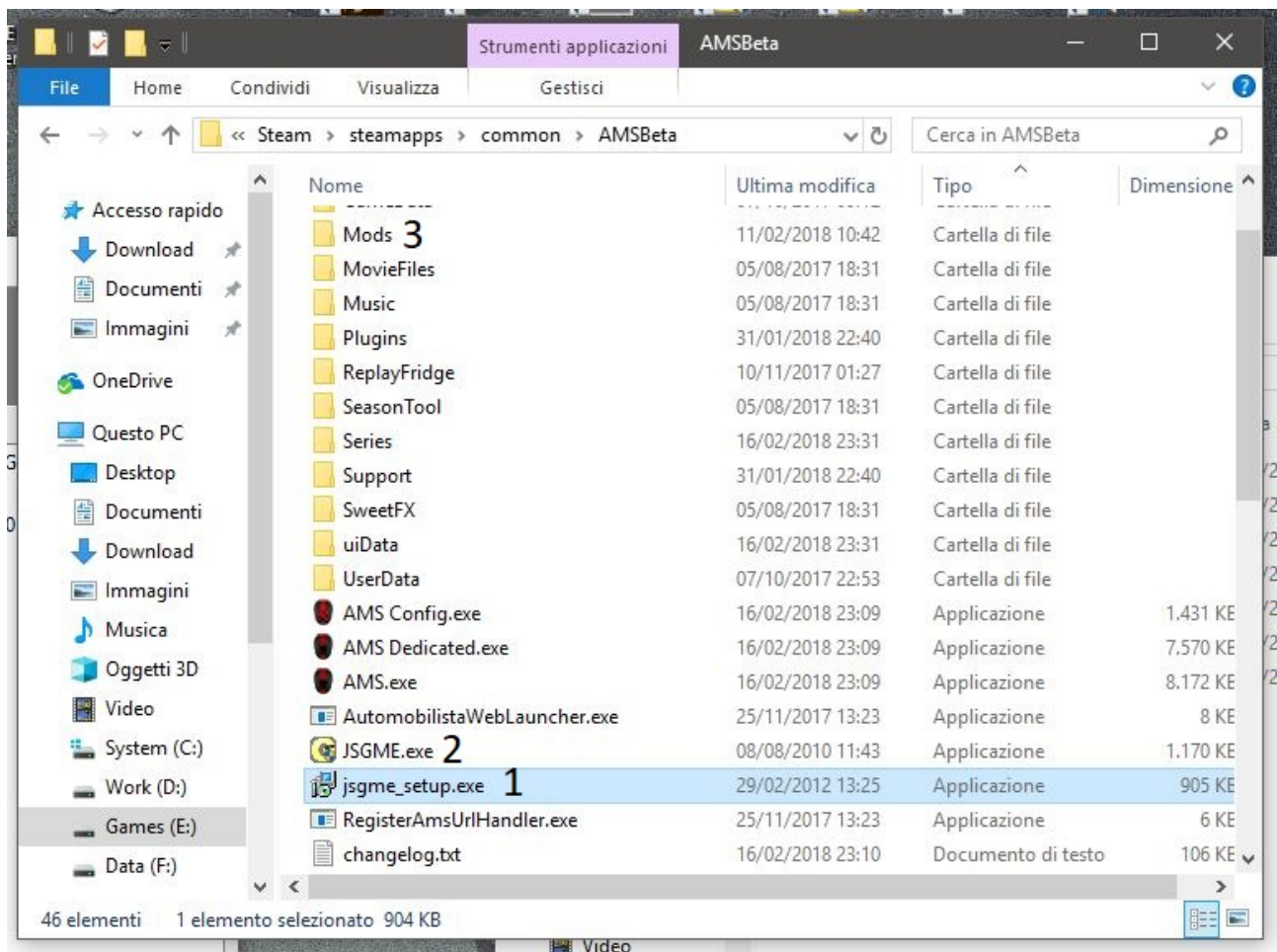


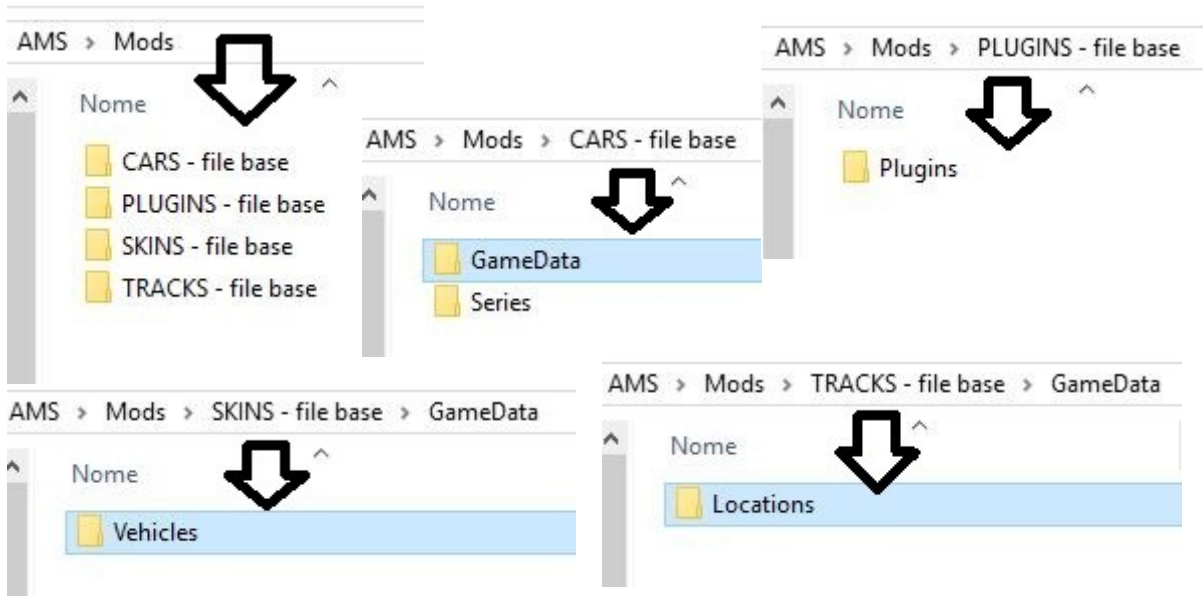
JaneSoft Generic Mod Enabler Tutorial for Dummies

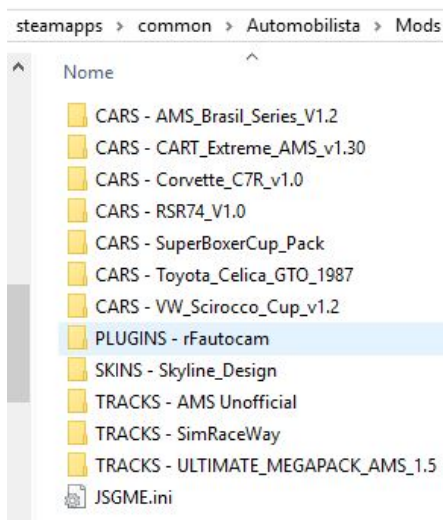


Copy **jsgme_setup.exe** (1) inside your AMS install

Install it, you will have now **JSGME.exe** (2) and **MODS** (3) folder

Open **MODS** folder and create the following folders with the following structure





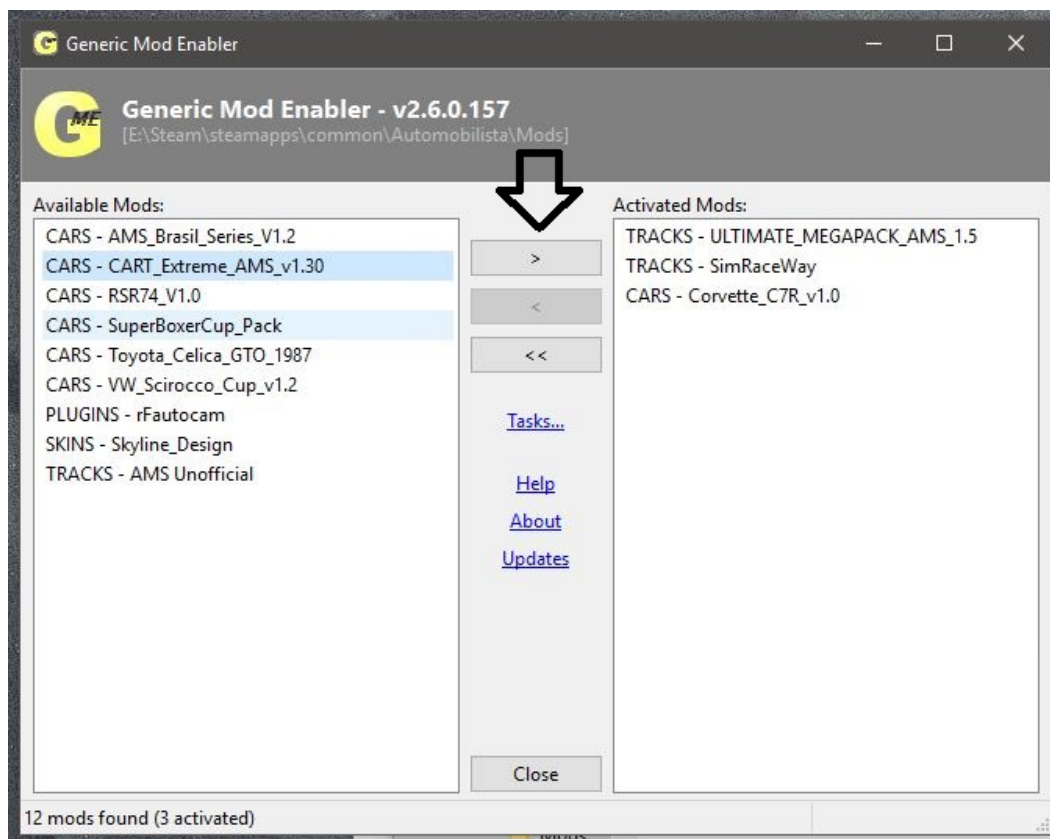
Now install your mods!

Just **copy** and **rename** the base folders like this:

CARS – file base → Cars – mod_name_version

Now put your mod inside of it and exit.

Open **JSGME.exe**, select > to load your mod, < to remove it, << to remove them all



Now you can **install**, **remove**, **update** and **reinstall** your mods with just one click without messing your main AMS install!