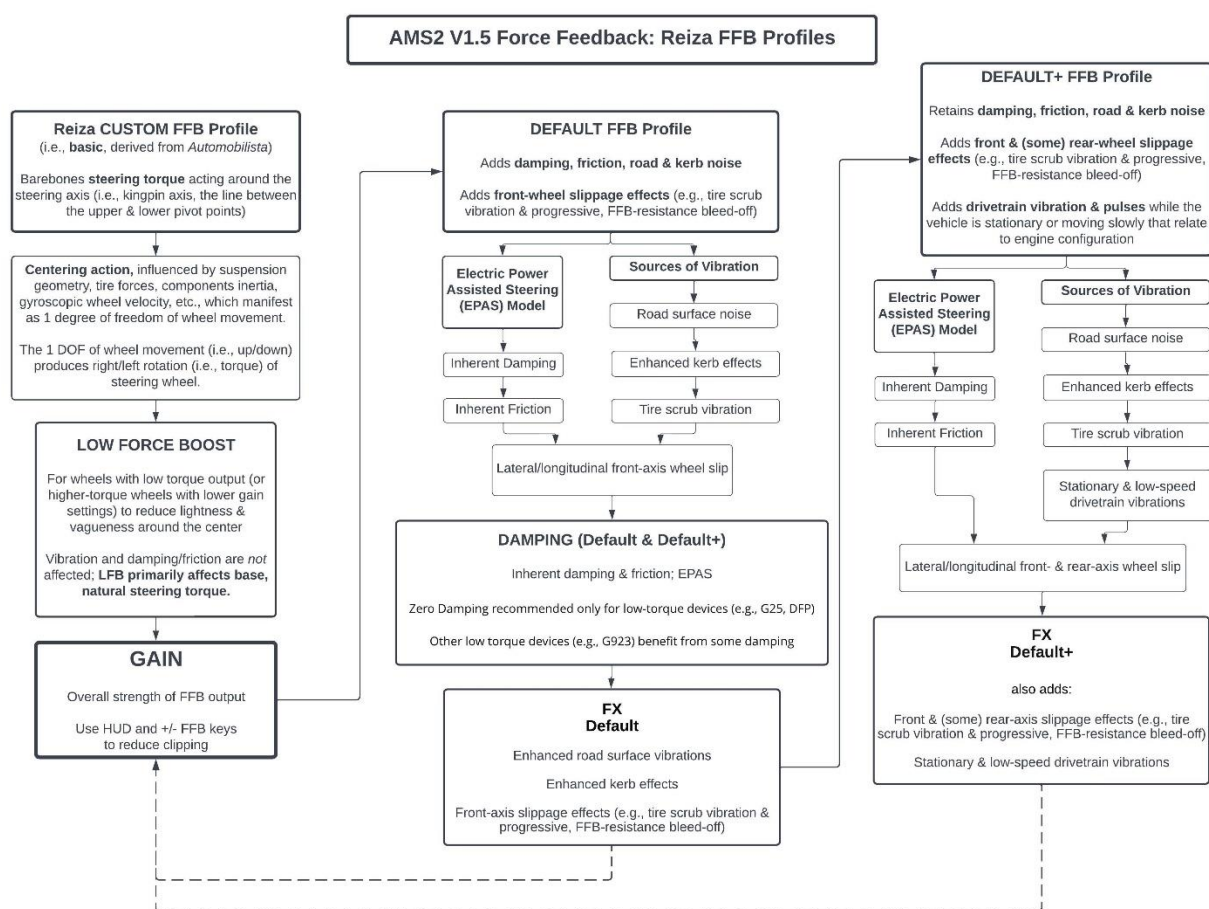


The *Automobilista 2* V1.5 FFB Guide by John B. Ellis

The purpose of this guide is to provide a clear methodology for determining optimal force feedback settings, for any wheel base, using Reiza's set of inter-related, force feedback profiles in AMS2 V1.5. The diagram entitled "AMS2 V1.5 FFB: Reiza FFB Profiles" visually encapsulates what was provided in Reiza's official thread about V1.4 FFB Recommendations by [@Domagoj Lovric](#), along with information derived from more recent V1.5 updates. The flowchart demonstrates how Reiza's three distinct, in-game FFB profiles may be deployed in a hierarchical, progressive manner to help obtain, or fine tune, individual FFB settings.



The *Automobilista 2* V1.5 FFB Guide by John B. Ellis

The Methodology

1) **Select the Reiza Custom (Basic) profile** in order to activate the "barebones steering torque" model derived from the *Automobilista's* PURE FFB profile. The following table displays how the FFB profiles created for AMS2 were influenced by those developed for *Automobilista*.

Automobilista FFB Profile	FFB Effects	AMS2 FFB Profile	FFB Effects
PURE	Realfeel forces only; MaxForceAtSteeringRack	→ Custom (basic)	steering torque around kingpin axis; rack_force
			↓
PURE + EFFECTS 1	+ damping, friction, kerbs, jolts & impacts	→ Default	+ damping, friction, enhanced road surface vibration & kerb effects; front-wheel slippage effects (e.g., tire scrub vibration & progressive, FFB-resistance bleed-off)
PURE + EFFECTS 2	+ brake pedal and steering vibration		↓
PURE + EFFECTS 3	+ engine RPM & car speed vibration	→ Default+	+ front- & rear-wheel slippage effects; stationary & low-speed drivetrain vibrations

In his [initial post](#) about V1.4, Domagoj includes recommended software settings for several wheel bases (summarized in the "Recommended FFB Wheel Base Settings" table). Notably, that table also lists the *exact* Fanatec DD2 Podium settings used by [@Coanda](#) to standardize FFB output across *all* vehicles in AMS2 V1.5.

AMS2 V1.4 Recommended FFB Wheel Base Settings (with available V1.5 updates)													
8 - 30 Nm				5 - 8 Nm				2 - 5 Nm					
Fanatec *	Fanatec	Fanatec	Simucube	Thrustmaster	Logitech	Logitech	Logitech	Logitech	Logitech	Logitech	Logitech	Logitech	Logitech
Podium DD2	Podium DD1	CSL DD w/bkit	2 Sport DD	TG-T	G29	G923	G27	G25	G27	G25	G27	G25	G25
Gain	35	30-40	60	Gain	40	Gain	75	Gain	80	80	Gain	100	100
LFB	2	0-10	7	LFB	2	LFB	10	LFB	50	50	LFB	60	60
FX	25	10-50	50	FX	50	FX	50	FX	20	20	FX	50	50
Damping	60	50-70	50	Damping	50	Damping	40	Damping	10	10	Damping	0	0
SEN	Auto	Auto	Auto	Overall Strength	40-60	Overall Strngth	75	Oper Range	900	900	Rotation	900	900
FFB	100	50	100	Steer Range	900	Constant	100	Sensvtvy	50	50	Ov. Strgth	100	100
FFS	Peak	Peak	Linear	Bumpstop feel	Soft	Periodic	100	Centering	20	20	Spring	0	0
NDP	10	10	22	Bumpstop range	900	Spring	100	Trueforce	unchecked	unchecked	Damper	0	0
NFR	3	3	14	Recon. filter	1	Damper	100	apply settings	checked	checked	Center	10	10
NIN	3	5	10	Torque band	2200 Hz	BOOST	OFF				Game adjust	checked	checked
INT	5	3-4	2-4	Damping	8-10	center/by wheel	0						
FEI	100	100-80	80	Friction	2-8								
FOR	100	100	100	Inertia	0-10								
SPR	OFF	100	100	Static force red.	0-15								
DPR	OFF	100	100	Slew rate limit	0.21								
SHO	OFF	OFF		UL Latency mode	Off								
BLI	OFF	OFF		peak notch filter	Disabled								
				DIE damping	0								
				DIE friction	0								
				Spring	0								

* Note: These Fanatec Podium DD2 settings were used by @Coanda to standardize FFB forces for *all* vehicles in AMS2 V1.5.

** Suggested FFB settings for AMS2 V1.5 prior to actual tuning.

Any vehicle in AMS2 ought to be drivable, and even raceable at the limit, lap after lap, using nothing more than the Basic FFB profile tuned with a sensible Gain setting and (if required) LFB value. A driver might *appreciate* the additional effects simulated by the Default & Default+ profiles (especially those users with higher-end gear, sim-rigs, etc.) but the sim's kingpin-axis suspension model, tire noises, and visual cues are sufficient and necessary for driving--and Reiza's Basic model serves as the foundation for *everything* that follows. Consequently, simracers who initially ignore the Basic profile may find it more difficult to determine their best Default or Default+ FFB settings. Note that both FX and Damping sliders are explicitly designed to have no intended effect when the Basic FFB profile is selected; regardless, *both FX and Damping should be set to 0 when initially exploring and developing a feel for the Basic model.*

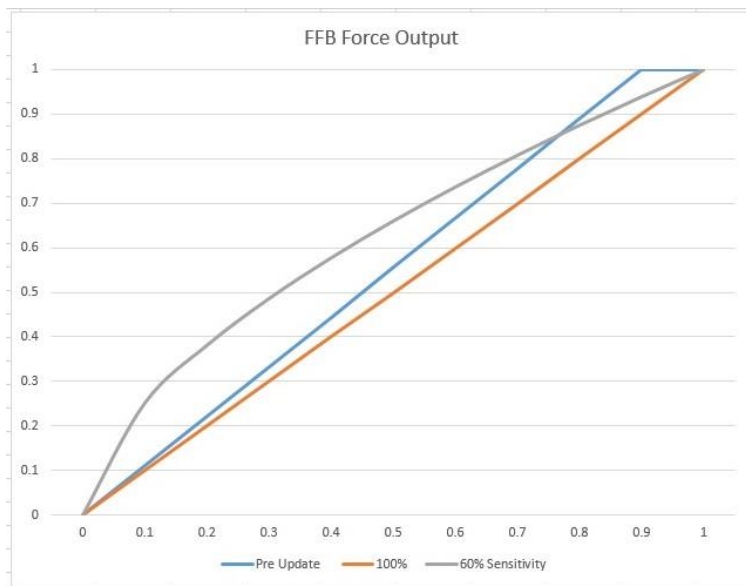
The *Automobilista 2* V1.5 FFB Guide by John B. Ellis

2) Using the **Basic FFB profile**, find the best **Gain** and (if necessary) **LFB** settings for your wheel. At this point, FX and Damping should be set to 0. Although the Wheel Base table lists recommended Gain and LFB settings for various hardware, a synthesis of the data yields a simple array of initial FFB settings:

Initial FFB Settings by Wheel Strength			
	2 - 5 Nm	5 - 8 Nm	8 - 30 Nm
Gain	80 - 100	60 - 80	30 - 60
LFB	50 - 60	10 - 40	0 - 10
FX	0 - 50	0 - 50	0 - 50
Damping	0 - 10	30 - 40	50 - 70

Setting Low Force Boost (LFB)

In most cases, LFB should be viewed as a "set it and forget it" item; that is, certain wheel bases may benefit greatly from it, while others hardly require LFB, if at all. At one end of the spectrum, the Logitech G25 is the weakest wheel base officially tuned for AMS2 (LFB 60). At the other end, [@Coanda](#) set LFB to only 2 when using a Fanatec Podium DD2 to tune FFB for all V1.5 cars. In order to better visualize exactly what LFB is intended to accomplish, here is the original LFB graph as provided for *Automobilista*:



Essentially, with LFB set to 60, the weakest 20% - 30% of forces generated by the sim are compressed within the initial 10% - 12% of wheel base force output (i.e., to help "the forces come in earlier"), which allows a lower-strength wheel base to operate within a higher effective range of its output. In most cases, users should simply utilize Reiza's recommended LFB values, subsequently modifying overall Gain strength as needed. If, after substantial testing, recommended LFB values feel overly intrusive or unconvincing, then lower LFB values (including LFB 0) can be trialed before settling on a final value to be held constant thereafter.

The *Automobilista 2* V1.5 FFB Guide by John B. Ellis

Setting Gain

Unlike most "one-and-done" FFB settings in AMS2, Gain is designed to be adjusted, as needed, to optimize FFB dynamic range and minimize clipping in order to maintain the optimal FFB experience. The HUD displays dynamic FFB clipping values in red, and per-vehicle Gain adjustments can be made, either up or down, while driving in the sim. After LFB is set, test out a selection of different cars and tracks to help adjust Gain values to produce a natural centering force and tire feel without undue clipping. Keep in mind that changes to suspension settings within the Advanced Setup menu may increase (or decrease) a vehicle's centering force, perhaps necessitating small changes in Gain values.

3) **Leave FX and Damping both at 0 and switch over to the Default FFB profile.** The Default profile takes the Basic profile and adds enhanced road/kerb vibrations as well as front-wheel slip/tire scrub effects derived from an Electronic Power-Assisted Steering (EPAS) model. With AMS2 V1.4, there were no appreciable differences between the Basic and default profiles when FX and Damping were set to 0. In AMS2 V1.5, however, there are *obvious* differences—even with FX and Damping zeroed--when switching between the Basic, steering-rack profile and the default profiles which include EPAS modeling. Therefore, keeping FX and Damping at 0 provides a suitable baseline for initial comparisons between all Reiza FFB profiles, prior to further fine tuning.

Setting Damping

Feel free to consult the suggested Damping values in the Initial Settings table; in short, weaker wheels require 0 to 10 Damping, whereas more powerful wheels benefit from 50 (+/- 10) Damping. The Damping slider primarily accounts for inherent damping and friction within the system, so determine a suitable Damping value first, and hold it relatively constant, before working to fine tune the FX setting. In general, all but the weakest wheel bases (e.g., G25/G27) will benefit from some amount of Damping. Once the Default profile is set with the correct LFB and Damping values for a specific wheel base, the user should develop a baseline feel for these settings while keeping FX at 0.

Setting FX

With Damping properly set, tune FX to your preferred level of enhanced road/kerb vibration & front-wheel slip/tire scrub effects, (e.g., progressive bleed-off in front-wheel FFB resistance as tires lose grip). As a result of the more recent physics updates and improved tire model, FX values in AMS2 V1.5 may need to be notably lower than those previously recommended for V1.4. Some users may decide to maintain FX at 0 if baseline EPAS modeling improves overall steering feel, devoid of additional vibration effects. Also, as Damping and FX values could conceivably interact with each other to some degree, the best combination of values may require a small bit of final tweaking, but once found, both Damping and FX should be held constant. Most likely, the Default profile will produce increased FFB levels compared to the Basic profile, so attenuate Gain as needed (either globally or on a per-car basis) to restore the desired FFB level.

The *Automobilista 2* V1.5 FFB Guide by John B. Ellis

4) **Finally, switch to Default+ FFB profile.** Default+ takes the Default FFB profile and additionally generates stationary/low-speed drivetrain vibrations and front- & rear-wheel slip/tire scrub effects. When switching from the Default to Default+ profile, it should be possible to leave LFB, Damping, and FX values unchanged, modifying overall Gain as needed to maintain optimal FFB output. With some hardware, however, FX may require a bit of further tweaking when moving up to the Default+ profile.

Once set, make note of the optimal LFB, Damping, FX, and Gain levels for each profile. With a common reference point now set, feel free to make final comparisons between Reiza's Basic, Default, and Default+ profiles based on your own hardware, testing results, and preferences.

Conclusion

The methodology described here will yield a clear understanding of what each Reiza FFB profile and/or FFB slider actually does in isolation and how they all, in fact, interrelate with one another. Despite all the evidence to the contrary in this article, Reiza's FFB profiles are actually designed to be relatively simple to set up, and the entire process can be reduced to the following:

- 1) **Set LFB and Damping to Reiza's recommended levels, based on wheel base strength.**
- 2) **Set FX to achieve desired level of vibration effects and additional EPAS-model enhancement.** Hold LFB, Damping, and FX constant.
- 3) **To optimize FFB dynamic range and minimize clipping, adjust Gain globally, and on a per-vehicle basis, as needed.**

The *Automobilista 2* V1.5 FFB Guide by John B. Ellis

As an example, here is how this tuning process would unfold with a Logitech G25:

1) Consult the Wheel Base table. If specific LFB and/or Damping values are not listed for a wheel, refer to its smaller “Suggested FFB Settings by Wheel Strength” table for a suitable starting range of values. For the G25, set LFB to 60 and Damping to 0.

2a) FX is initially set at 0 while testing the Basic profile.

3a) After driving a selection of cars with the Basic profile, the recommended Gain value of 100 is reduced globally to 95.

2b) The Default profile is engaged. FX is still at 0.

3b) After driving a selection of cars with the Default profile, baseline EPAS model contributions (FX 0) are judged as positive (e.g., improved steering feel without increased damping). Gain is reduced globally to 85.

2c) Higher FX values with Default profile are trialed, to no positive effect. The additional vibrations are perceived as an annoyance on the G25, and impair overall steering feel. FX is returned to 0.

3c) The Default+ profile is engaged (FX 0). Previous poor results trialing higher FX values (step 2c) makes further FX testing unnecessary. After testing an additional selection of cars, Gain is reduced globally to 75.

Final settings:

Basic profile: Gain 95, LFB 60, FX 0, Damping 0

Default profile: Gain 85, LFB 60, FX 0, Damping 0

Default+ profile: Gain 75, LFB 60, FX 0, Damping 0

Although all three Reiza FFB profiles were systematically optimized using this method, further comparisons may be required to settle which FFB profile is the preferred choice. Alternatively, given the vast range of content in AMS2, as well as the long developmental arc of the sim, certain vehicles may temporarily respond better to one profile rather than another. Moreover, the consistency of this tuning approach will help a simracer better discern sim-related issues worthy of report to developers (e.g., “I am confident in my FFB tune, but the Formula Reiza still feels way off compared to other cars in AMS2.”) rather than unintentionally misinterpreting noise and variability stemming from suboptimal FFB settings. Simracers who utilize this methodology, but who ultimately fail to connect with any of the original FFB profiles in AMS2--or who are genuinely interested in exploring additional layers of FFB complexity--may be better served utilizing a third-party, custom FFB profile (conveniently available [here](#)) rather than over-complicating Reiza's straightforward approach to FFB.

The *Automobilista 2* V1.5 FFB Guide by John B. Ellis

Appendix: Centering Force for Logitech G25 & G27 Users

According to the V1.4 guidelines provided by Reiza, Logitech G29 & G923 users should set the centering force in G HUB to 20. By the same reasoning, though not explicitly stated in the post, G25 & G27 users should consider setting their Wingman Profiler centering force to 10%, as recommended in the original *Automobilista User Guide*, p. 34:

Rotation

900 degrees. The game will automatically adjust the allowed range based on the car.

Force Feedback

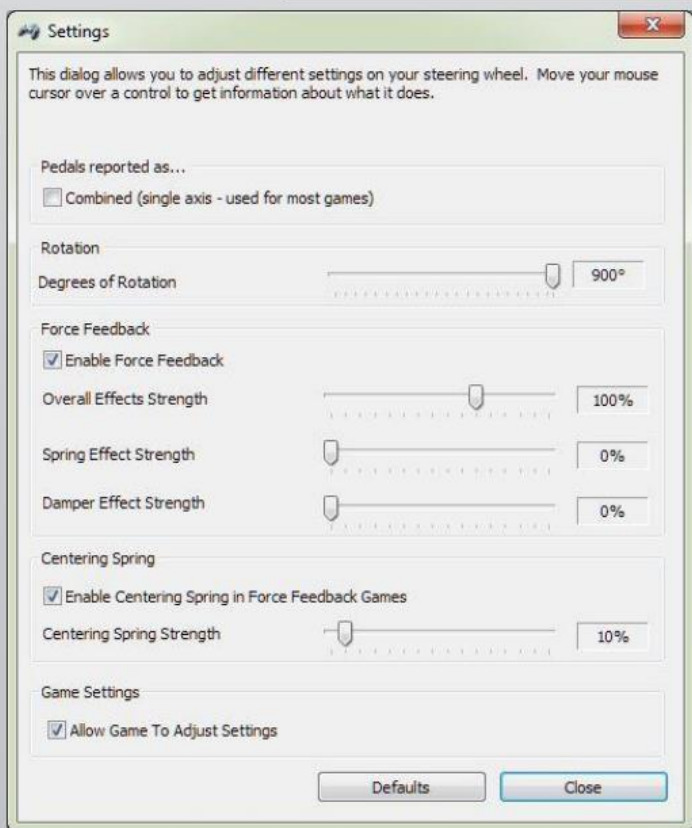
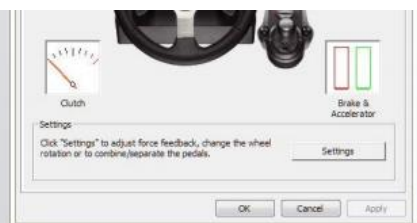
We recommend just running with overall effects strength at 100% and the others reduced to 0%. We want you to feel exactly what is coming from the car.

Centering Spring

We recommend adding a small amount of centering spring as it reduces clipping and doesn't really interfere with FFB

Game Settings

It is very important that you allow the game to adjust settings automatically so we can set the rotation correctly!



Of note, Reiza's G25 profile from *Automobilista* sets Force Feedback Strength at 100 and FFB Low Force Boost at 60, which are *identical* to the Gain and LFB values now recommended for AMS2. Gain may need to be attenuated when driving high-downforce vehicles using the HUD's FFB display and Vehicle FFB Gain +/- keys. Regarding wheel base profile software, keep in mind that Steam typically selects the AMS2AVX executable in most cases, regardless of VR status (if so, the AMS2 version number on the main menu will end in .AVX).